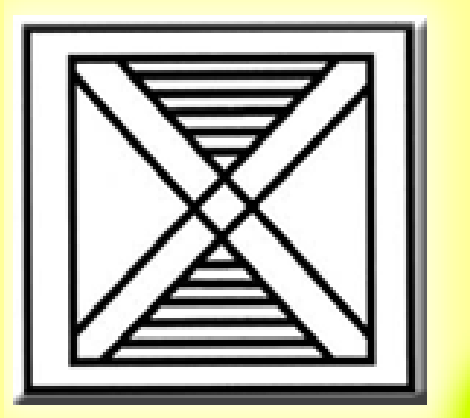


# **Sharecare Ghana**



**Sharecare4u**



## **STRATEGIC PLAN**

**2016 - 2018**

# 1. Introductory Statement

**Sharecare Ghana** is a non-governmental organization set up in 2007 in Ghana for persons with autoimmune and neurological disorders and their carers and families. This strategic plan has been developed by members of the organization in order to provide a disciplined approach to management of Sharecare Ghana over the next three years.

## CONTACT DETAILS

Sharecare Ghana  
P.O. Box CT 4910  
Cantonments- Accra, Ghana  
Telephone Number: +233-(0)  
208157404 / 264102217  
Email: [sharecare4u@gmail.com](mailto:sharecare4u@gmail.com)  
Website: [www.sharecare4u.org](http://www.sharecare4u.org)

## 2. Background Statement and Brief History of Sharecare Ghana

**Sharecare Ghana** is a non-governmental organization setup in 2007 in Ghana for persons with autoimmune and neurological conditions, and their families and care givers. The organization is based in Accra, Ghana, and has over 250 members, including children, some of whom exhibit a wide spectrum of autoimmune and neurological conditions. The organization was founded by Nana Yaa Agyeman, who has neuro myelitis optica. Her condition was only diagnosed seven years after the onset of symptoms. She thought it would be a good idea to provide a forum for exchanges of ideas and support for persons with similar conditions.

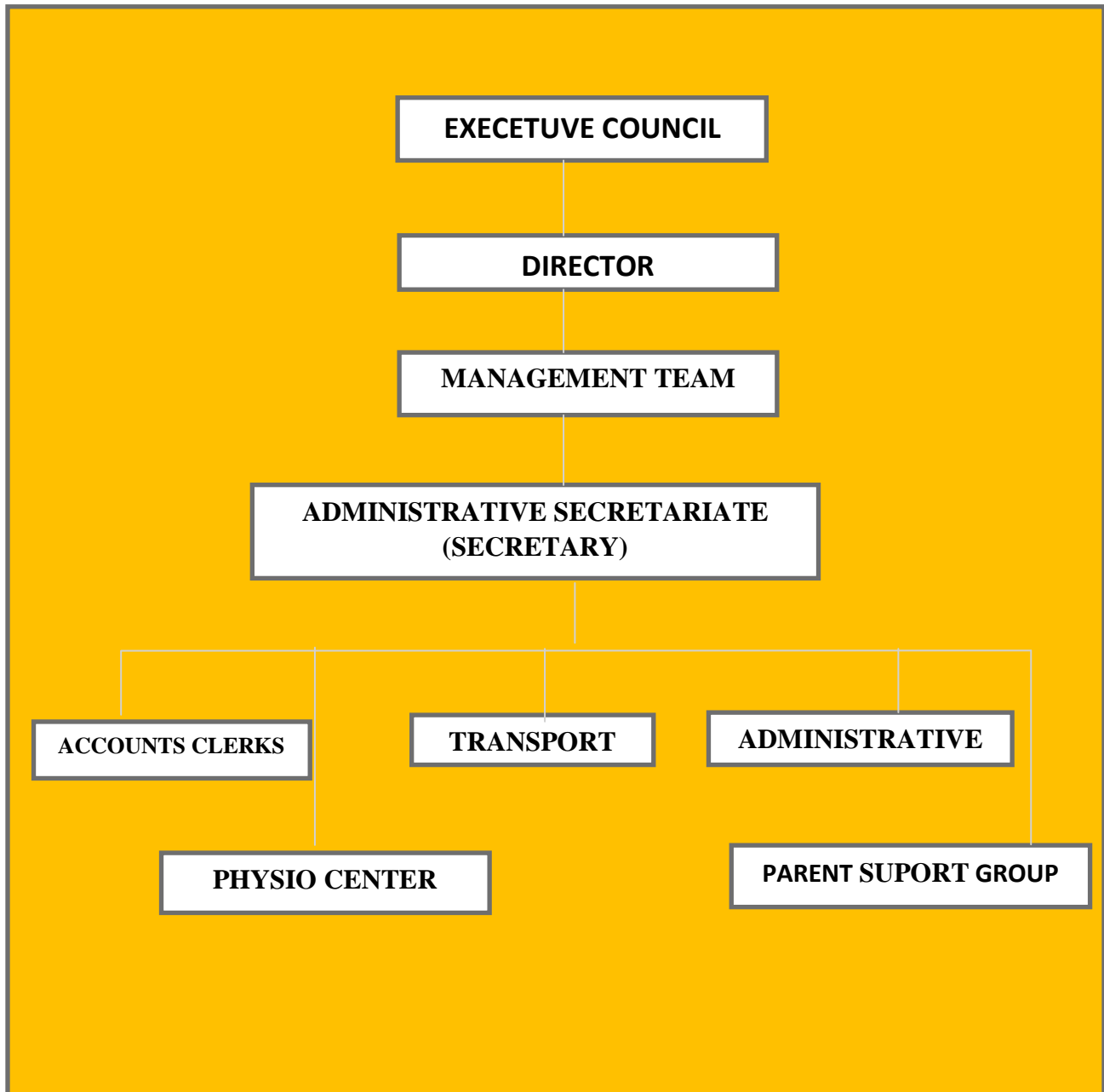
A number of key changes have occurred since Sharecare Ghana was formed. Organizations in the medical and legal professions and governmental organizations have now heard about Sharecare Ghana and offer assistance in its projects. Support has been forthcoming from the Office of the First Lady in Ghana, SWEB (Samuel Wellington Botwey) Foundation and other organizations which include the Accra Physiotherapy and Sports Injury Clinic, PhysioShop in Accra, Dr. Joyce Aryee, Mr. Derrick Dankyi (Logiciel), Dr. Tony Omu, and Melting Moments, among others. Sharecare also has good links with neurosurgeons, neurologists, and rheumatologists in the country. Sharecare Ghana now has a list of conditions suffered by members.

### 3. Organizational Structure of Sharecare Ghana

**Sharecare** Ghana is a not-for-profit entity which is duly registered under the laws of Ghana. It is topped up by an Executive Council. The Director oversees the work of the organization and its day to day affairs are conducted by a Centre Manager who is supported by a Social Worker. A Welfare Officer, Finance/Administrative Secretary and Driver are also engaged by the organization to assist in conducting its work.



# What we are aiming for within three years



## 4. Organizational Tenets

⇒ **GOAL**

To protect the interests of, and advocate for persons with neurological and autoimmune conditions in Ghana.

⇒ **VISION**

Sharecare Ghana's vision is of a society that factors in every person's condition of health and/or disability and guarantees their human rights and dignity, and also perceives all its members from a viewpoint of total inclusion, under the laws of Ghana.

⇒ **MISSION**

To create awareness of, advocate for and support people with disorders that are caused by autoimmune and neurological factors and promote research into these conditions.

⇒ **STRATEGY**

Sharecare Ghana believes that we should ensure optimum health for all persons with autoimmune and neurological conditions, through highlighting the importance of medical research, confronting negative perceptions of persons with disability, advocating that medical staff are fully cognisant of pre- and post-natal contributors to the foregoing conditions and reminding the public of the provision of total health coverage for the disabled under the laws of Ghana.

⇒ **VALUES**

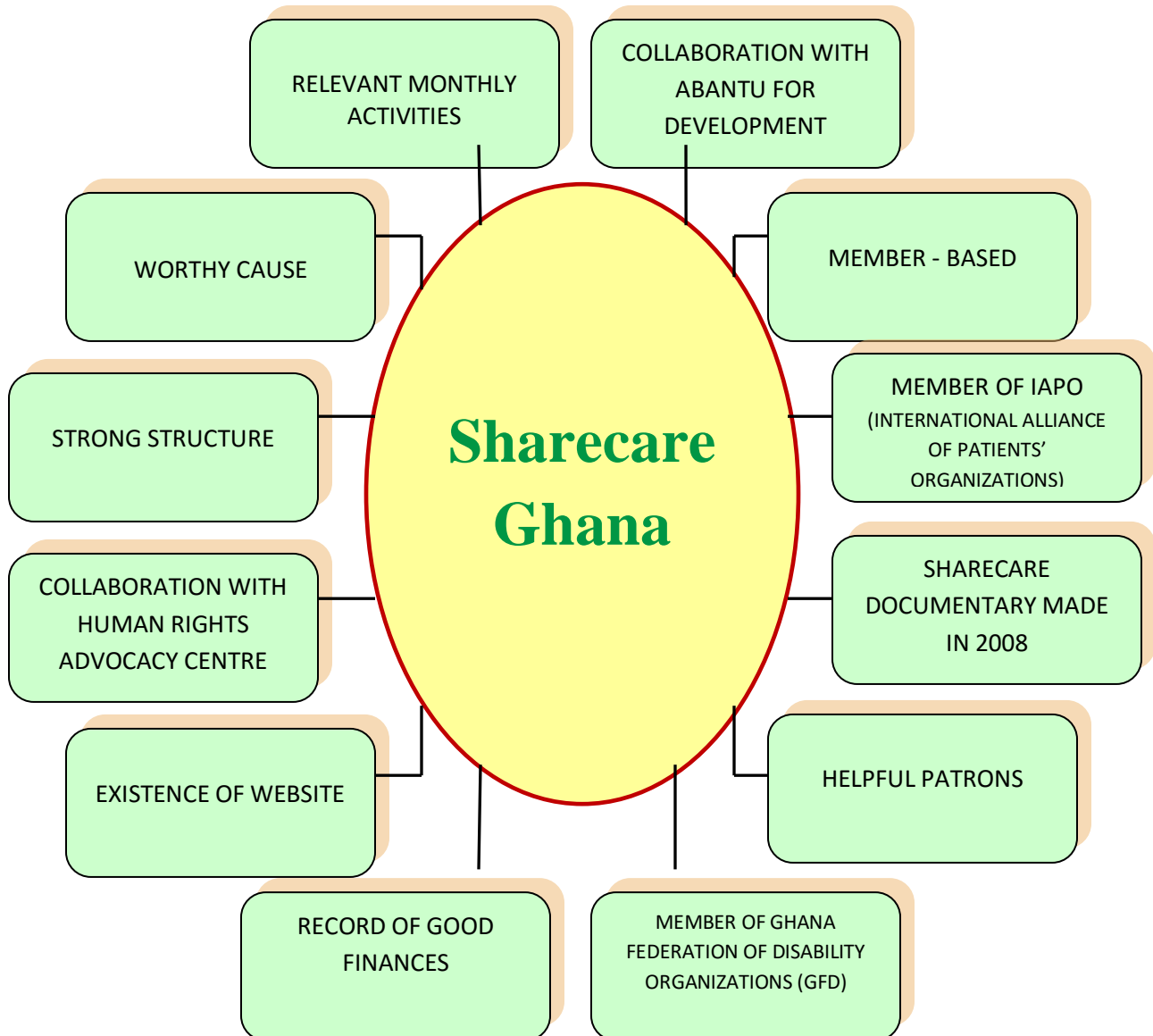
Sharecare Ghana believes that:

- Persons with disabilities are as important as able-bodied persons to the society;
- Every society should make provision for the care of and support persons with disabilities;
- Every society should provide an enabling environment to ensure that persons with disabilities can access services such as: transport, education, health, the legal system, public structures, relevant assistive devices and any other services and equipments that will empower persons with disabilities;
- There transparency and accountability should be ensured in its' operations and;
- That there should be no discrimination regardless of one's disability.

# 5. S.W.O.T. Analysis

## STRENGTHS OF SHARECARE GHANA

There are at least twelve (12) strong points of Sharecare Ghana:



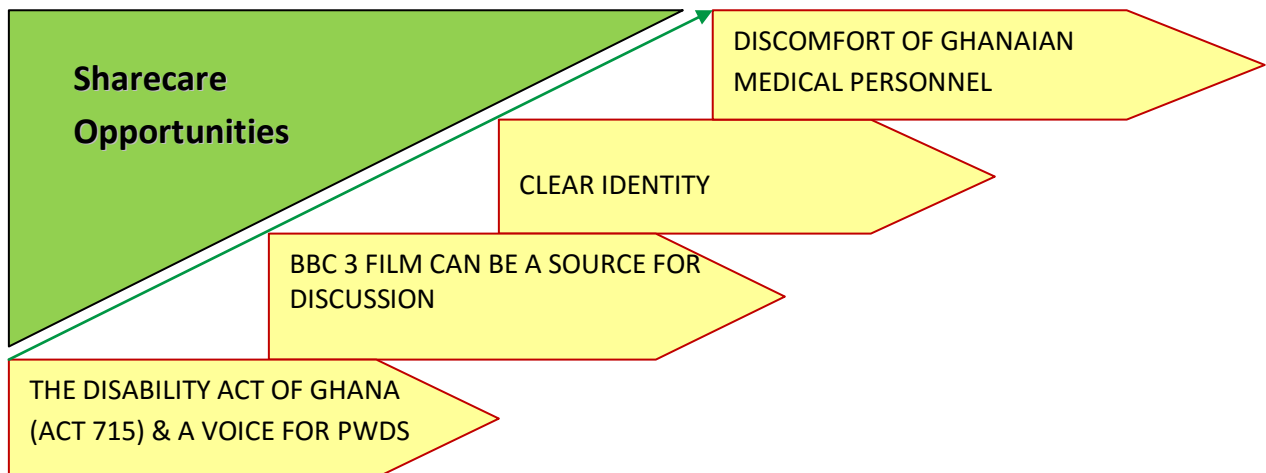
**WEAKNESSES OF SHARECARE GHANA**

Sharecare Ghana has a number of weaknesses that must be strengthened and/or eliminated altogether:

LIMITED PHYSICAL STRENGTH OF MANAGEMENT AND MEMBERS	MEMBERS INABILITY TO PAY DUES	NOT FAMOUS ENOUGH, ANOTHER DOCUMENTARY NEEDED
WEBSITE SHOULD BE PUBLICISED	<b>Factors contributing to weakness at Sharecare</b>	INSUFFICIENT FUNDING
FOUNDER TIRED	INEFFECTIVE NATIONAL COUNCIL ON PERSONS WITH DISABILITY (NCPD)	DISINTEREST OF MINISTRY OF GENDER, CHILDREN AND SOCIAL PROTECTION IN DISABILITY ISSUES

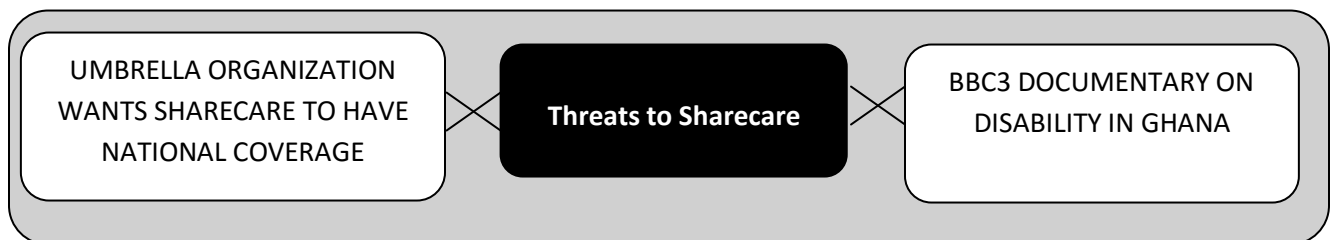
**OPPORTUNITIES FOR SHARECARE GHANA**

There are some opportunities upon which Sharecare Ghana could capitalize:



**THREATS**

The observed threats to Sharecare Ghana are:





## 6. Strategic Objectives

**Sharecare Ghana's activities** in the Strategic Plan for the years 2016 to 2018 will focus on issues identified in the S.W.O.T. analysis and other issues that have come up over the years. Where possible, Sharecare Ghana will partner with institutions mentioned in the analysis and in our work so far. This, we hope, will ensure that wider institutional change will take place, rather than changes that affect Sharecare only.

Regular activities include monthly support group meetings, two Executive Council meetings a year, and monthly parents support group meetings.

The specific **Strategic Objectives** of Sharecare Ghana for the three-year period from 2016 to 2018, action steps and time frame, are set out on the following pages:

<b>OBJECTIVES</b>	<b>ACTION STEP Requirements for achieving objective?</b>	<b>PERSON/ ORGANIZATION Who?</b>	<b>YEAR What year?</b>	<b>COMPLETION When finished?</b>	<b>EVALUATION How and by whom?</b>
<b>To highlight the importance of medical research nationwide</b>	To continue research programme on autoimmune disease initiated with Noguchi Memorial Institute for Medical Research	Noguchi Memorial Institute for Medical Research and selected doctors	2016	2018	Completed report on research programme  Questionnaires to be given to participants at various outreach programmes. Report from Sharecare and media.
	To carry out medical outreach in 10 regions on chronic conditions and disabilities	Sharecare, GFD, OPWDs, NCPD, medical schools, Ghana Medical Association, Noguchi Memorial Institute for Medical Research, Media	2017	2017	Evidence of whether there has been increase in medical research by at least one medical school in Ghana
<b>To confront negative perceptions of persons with disabilities.</b>	Documentary on regular Sharecare activities to create awareness and educate the public on the issue.	GFD, OPWDs, BBC, TV3, Sharecare	2016	2017	Completed documentary film. Survey of people's opinions about the documentary, by media. Media entry and exit interviews.
	Publicity on income generation activities of PWDs	Sharecare, GFD, OPWDs, SWEB Foundation, Media.	2016	2016	Media coverage of bazaar of products.

<b>OBJECTIVES</b>	<b>ACTION STEP</b> <i>Requirements for achieving objective?</i>	<b>PERSON/ ORGANIZATION</b> <i>Who?</i>	<b>YEAR</b> <i>What year?</i>	<b>COMPLETION</b> <i>When finished?</i>	<b>EVALUATION</b> <i>How and by whom?</i>
<p><b>To advocate that medical staff are fully cognizant of pre- and post-natal contributors to autoimmune and neurological conditions.</b></p> <p><b>Public advocacy on the provision of total health care for persons with disabilities</b></p>	<p>Training to educate health professionals in Ghana on possible causes of disability</p>	<p>Sharecare, GFD, Ghana Health Service, Nurses and Midwives Council, Community Health Nurses, medical Institutions, UNICEF, District Assemblies, media</p>	<p>2016</p>	<p>2016</p>	<p>Completed questionnaires to training event participants by Ghana Health Service.</p> <p>A survey of parents and expectant mothers by Ghana Health Service</p>
	<p>Ensure Sharecare representation on meetings on amendment of NHIS law.</p> <p>Ensure representation of Sharecare members on media discussion programmes on NHIS and persons with disabilities.</p>	<p>NHIA, Parliamentary Select Committee on Health, GFD, NCPD, selected district assemblies, media</p>	<p>2016</p>	<p>2018</p>	<p>Documentation on meetings.</p> <p>Transcripts from media discussion programmes</p>

<b>OBJECTIVES</b>	<b>ACTION STEP</b> <i>Requirements for achieving objective?</i>	<b>PERSON/ ORGANIZATION</b> <i>Who?</i>	<b>YEAR</b> <i>What year?</i>	<b>COMPLETION</b> <i>When finished?</i>	<b>EVALUATION</b> <i>How and by whom?</i>
<b>To highlight the state's responsibilities with regard to access to services and the built environment by persons with disabilities</b>	Audit of the current disability law of Ghana; audit of public structures.	NCPD, GFD, GSPD, Ghana Standards Authority, University of Ghana – Centre for Social Policy Studies, Sharecare, Ghana School of Law, Metro Mass Transit (MMT), Ghana Private Road Transport Union (GPRTU) and volunteers	2016	2018	Terms of reference, records of communication, completed and reviewed documents
<b>To sponsor/source funding for Sharecare and other rehabilitation programmes for persons with disabilities</b>	Creation of awareness of diagnosis of autoimmune and neurological conditions, assessment and physiotherapeutic activities	Sharecare, SWEB Foundation, public and private medical institutions	2016	2018	Medical and rehabilitation records

# 7. Conclusion

This document is completed, however we welcome any useful changes that will help fulfill Sharecare Ghana's mission.

Thank you.